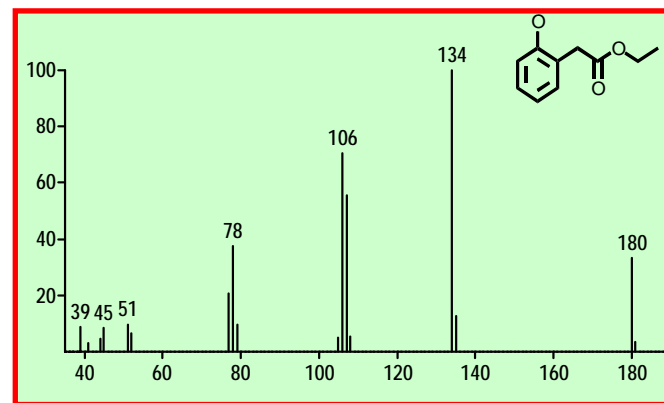


ISCI Seminar Series 2006

Data Mining in Mass Spectral Database

With the growth of chemical measurement and modern information technology, more and more huge databases containing a large amount of chemical compounds information are established, for example, mass spectral database. How to discover knowledge hidden in huge collections is a big challenge. In this talk we will discuss data mining in mass spectral (MS) database. We will review the application of library searching and classification methods, traditional or modern, on MS database and propose new methods to analyze MS database.



Speaker: Dr. Ping He

Time: 2:00 pm - 4:00 pm, Sep. 12th, 2006

Venue: A103, LiZe Building, Zhuhai
Campus of Beijing Normal University